

**HOTEL SIGNAGE**

- \* **INTERIOR SIGNAGE**
  - PERMITTED ON ANY REGION OF GLAZING
  - LIT OR NON-LIT
- \* **FASCIA SIGNAGE**
  - ALLOWABLE REGIONS LABELED ON ELEVATIONS
  - SIZE, TYPEFACE & MATERIAL TO BE APPROVED BY OWNER AND ARCHITECT
  - LIT OR NON-LIT
- \* **CANOPY MOUNTED SIGNAGE**
  - ALLOWABLE AT ANY AREA ABOVE CANOPIES
  - STAINLESS STEEL CHANNEL LETTERING
  - SIZE AND TYPEFACE TO BE APPROVED BY OWNER AND ARCHITECT
  - LIT OR NON-LIT

**TENANT SIGNAGE OPTIONS**

- \* **INTERIOR SIGNAGE**
  - PERMITTED ON ANY REGION OF GLAZING
  - LIT OR NON-LIT
- \* **FASCIA SIGNAGE**
  - ALLOWABLE REGIONS LABELED ON ELEVATIONS
  - STAINLESS STEEL CHANNEL LETTERING
  - SIZE AND TYPEFACE TO BE APPROVED BY OWNER AND ARCHITECT
  - LIT OR NON-LIT
- \* **CANOPY MOUNTED SIGNAGE**
  - ALLOWABLE AT ANY AREA ABOVE CANOPIES
  - STAINLESS STEEL CHANNEL LETTERING
  - SIZE AND TYPEFACE TO BE APPROVED BY OWNER AND ARCHITECT
  - LIT OR NON-LIT

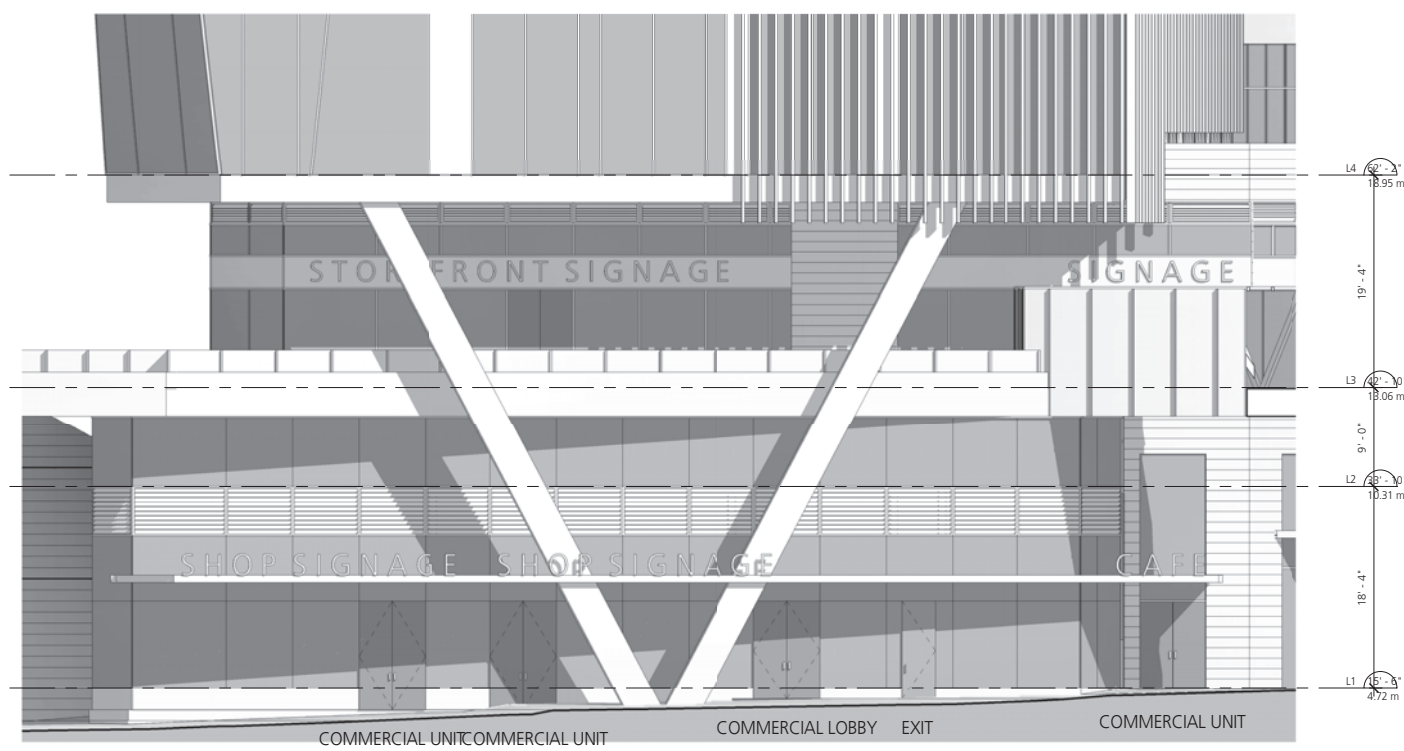


gBL ARCHITECTS INC.  
 140 - 2034 WEST 11TH AVENUE TEL 604 736 1156  
 VANCOUVER, BC CANADA V6J 2C9 FAX 604 731 5279

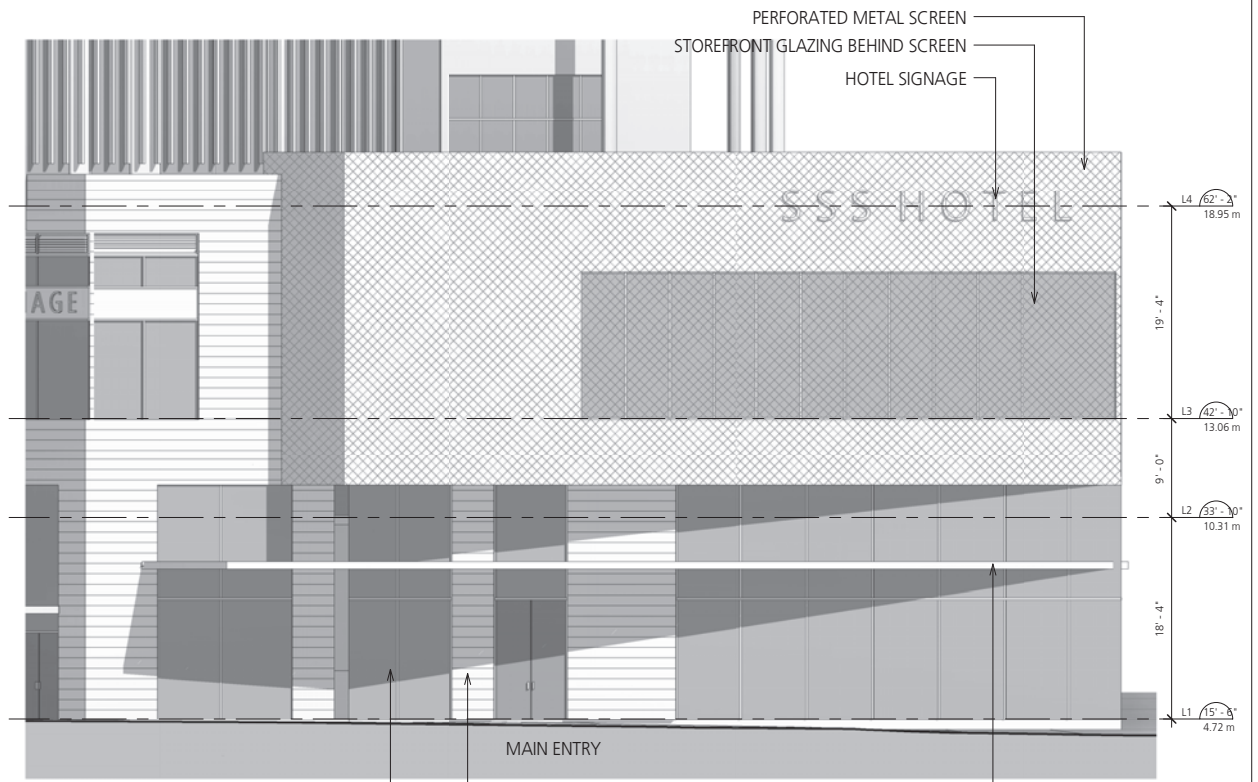
COPYRIGHT RESERVED. THE PLAN AND DESIGN ARE THE PROPERTY OF gBL ARCHITECTS INC. AND MAY NOT BE USED OR REPRODUCED WITHOUT THEIR WRITTEN CONSENT.

NOTES

REVISIONS		
NO.	DATE	DESCRIPTION
1	SEP. 4, 2013	DEVELOPMENT PERMIT APPLICATION



MUSEUM WAY FRONTAGE  
 1/8" = 1'-0"



GORDON STREET FRONTAGE  
 1/8" = 1'-0"

**GORDON STREET HOTEL**

DEVELOPMENT PERMIT

**STOREFRONT & SIGNAGE**

DATE	04/09/2013 11:38:52 AM
DRAWN BY	JS
CHECKED BY	AB
SCALE	1/8" = 1'-0"
JOB NUMBER	1319

**A-4.03**